

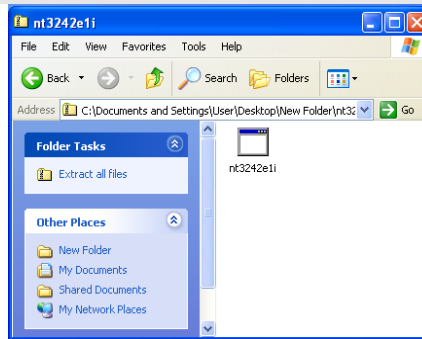
## Step 1: Install NetTerm

---

Open attached zip file:



Double click the file contained in the zip file (nt324e1i)

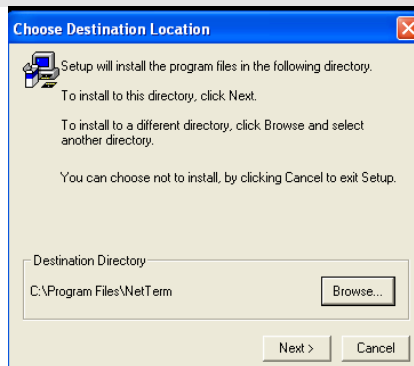


The installation process will begin.

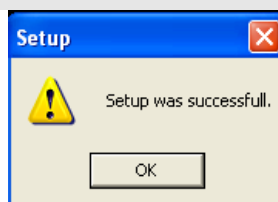
You will be presented with a language selection screen, select English, then click Next >



Click Next again

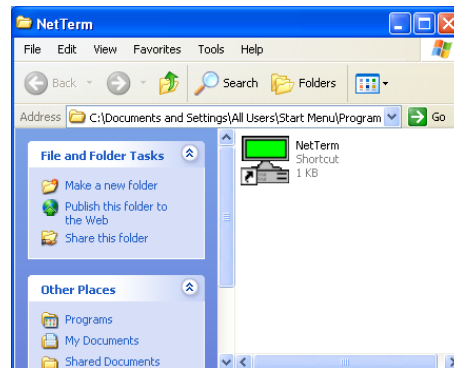


When the installation completes, click OK



The setup program will close, and you will be presented with the following window.

Note: For more convenient access to AutoView, we recommend you copy the NetTerm icon to you desktop. To do so, right click on the NetTerm icon, then select Send To, then click Desktop (create shortcut).



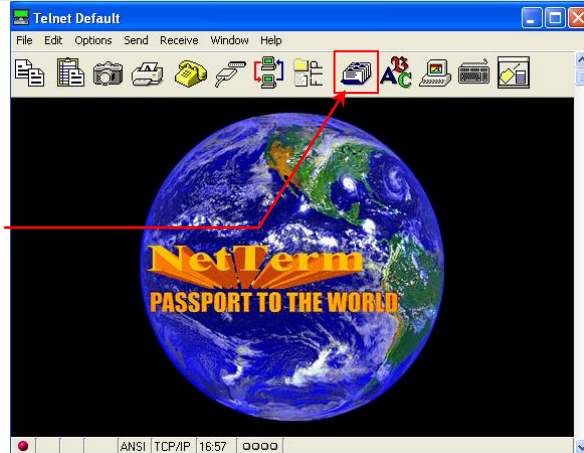
**NetTerm Setup in now complete**

## Step 2: Configure NetTerm to connect to AutoView

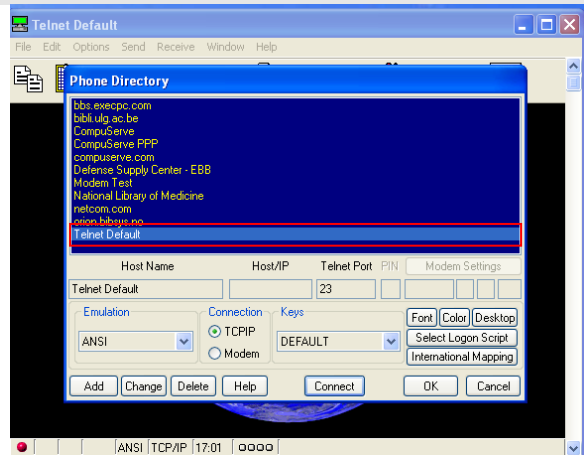
Open NetTerm by double clicking the icon



Click the Phone Directory Icon



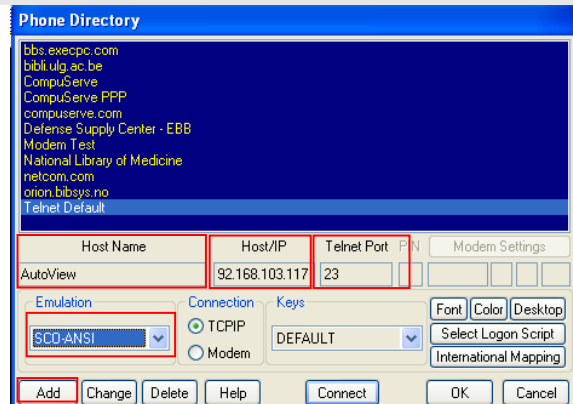
Select Telnet Default from the list in the blue panel by clicking it



Change the details in the highlighted areas, then click Add

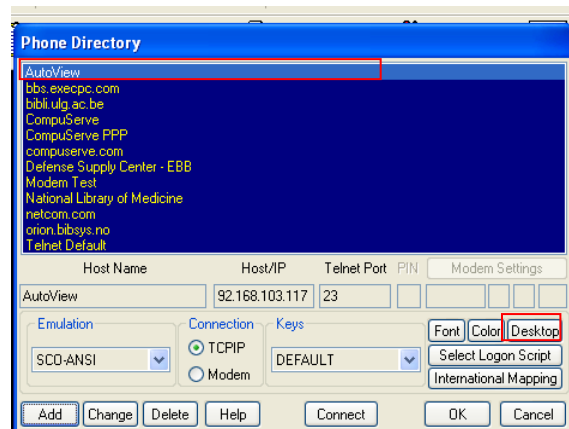
**Host Name:** Autoview  
**Host/IP:** see note below  
**Telnet Port:** 23  
**Emulation:** SCO-ANSI

Note: The Host/IP number may be different to what is displayed in this example. If you do not know the correct number you can find out by opening the phone directory on one of your existing computers (if you have one). Otherwise, please contact us.



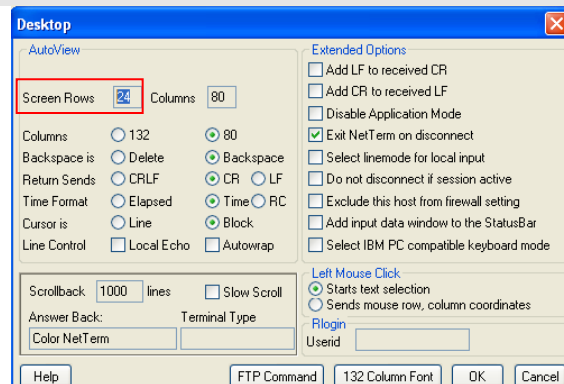
Once you click Add, your AutoView connection details will be stored. An AutoView entry will be added to your directory.

Now click the Desktop button

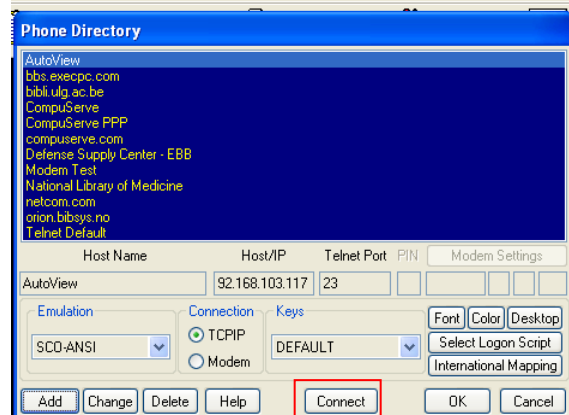


Change the first column of Screen Rows from 24, to 25

Then click OK

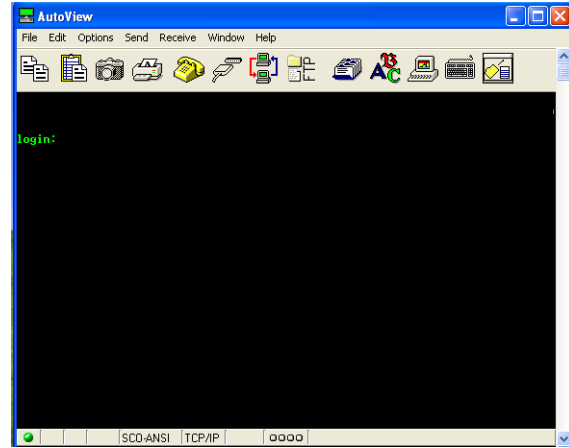


Now click Connect



You will then be presented with the login prompt. Login as normal.

Note: Your login screen may be different from the example shown here.



**Configuration is now complete**